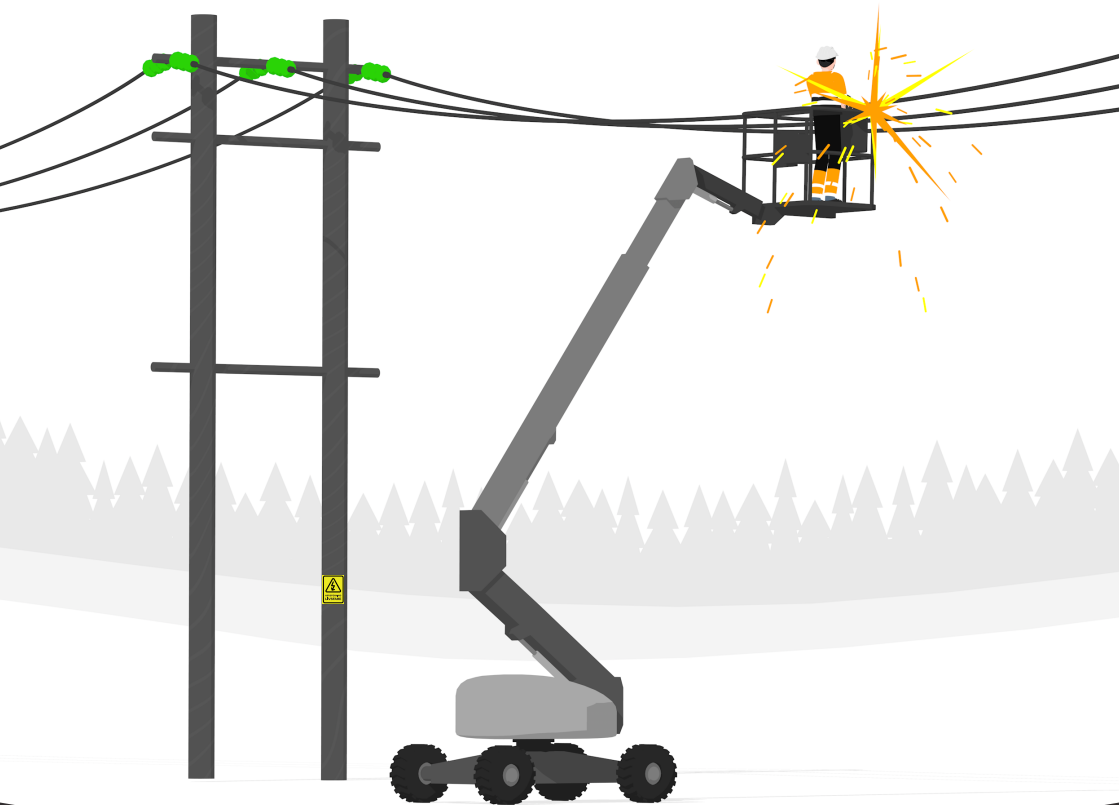


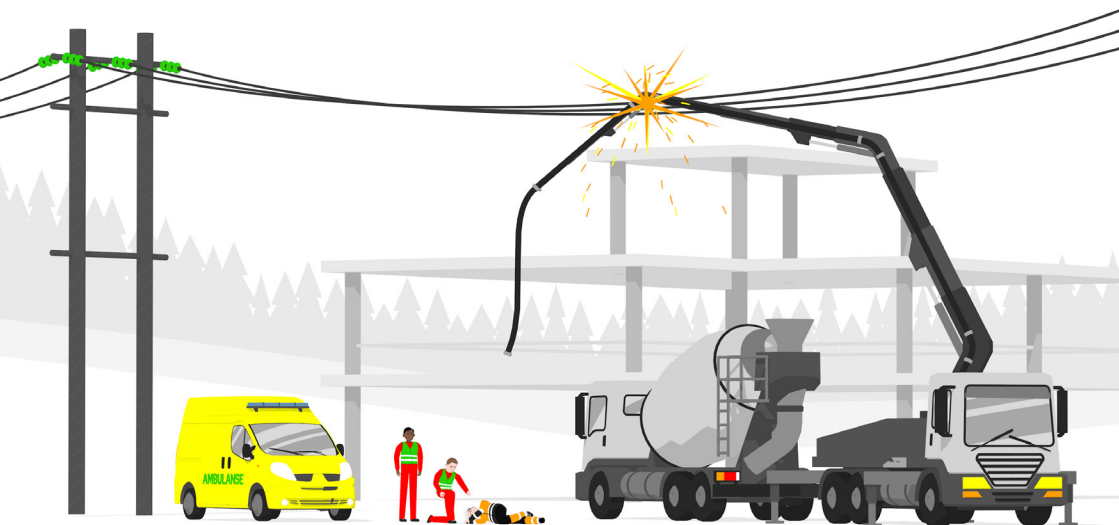
Working close to high-voltage lines and cables is extremely dangerous.



Elvia

You must notify the distribution system operator!

If you will be working within 30 m of a power line, you must notify Elvia in advance for an inspection and to agree relevant safety measures.



High-voltage lines are extremely dangerous, even when you are many metres away. Touching high-voltage lines and installations has led to many near-misses and tragic fatal accidents.



Liability for damages

Damaging equipment belonging to the distribution system operator can result in liability for losses caused by disruption to electricity supplies and the cost of repairs.

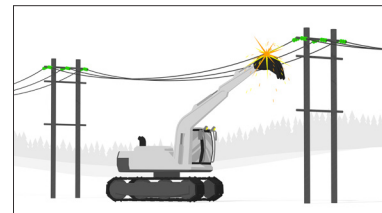
For example: An excavator damages a high-voltage cable in a residential area. As a result of the damage, over 100 customers are left without power for one hour.

Total cost: about NOK 200,000.

Safety measures

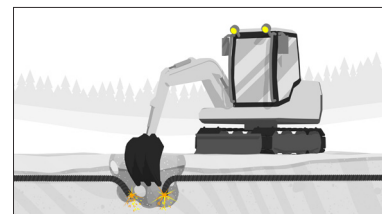
• Site work

Investigate whether there are any high-voltage lines close to where you are working if you are using heavy plant or forestry machinery, transport equipment or other equipment with a long reach. All work within 30 m of a line must be assessed by an Elvia-approved high-voltage Safety Supervisor (LFS).



• Excavating, drilling and sheet piling

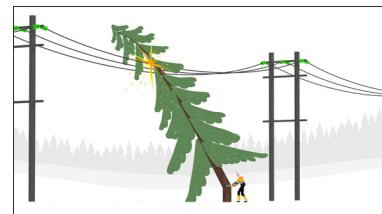
Cable detection must always be carried out before any excavating or drilling activities begin. You must always contact Elvia if you will be working within 5 m of regional grid cables.



Cable detection is free of charge

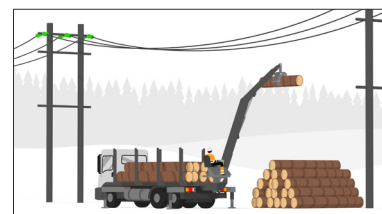
• Felling trees

Always contact the distribution system operator in advance for an inspection and to agree relevant safety measures before felling trees close to high-voltage lines.



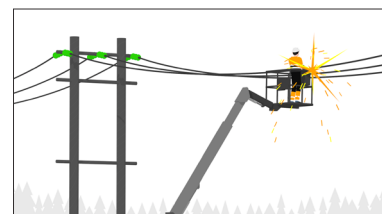
• Storage below power lines

This is not permitted. Contact Elvia to agree storage close to high-voltage lines.



• Hoists

Always check whether there are any electrical cables or power lines in the area where the hoist will be used. You must contact Elvia if you will be within 30 m of a high-voltage installation.





Get in touch

Geomatikk →

- Cable detection and notification of excavations

Telephone: **915 09 146**

Mon-Fri 07.00 – 16.00

(also 24-hour emergency telephone)

E-mail: gravemelding.oslo@geomatikk.no

Website: ledningsportalen.no

Elvia →

24-hour telephone

Innlandet: **62 12 30 00**

Oslo/Viken: **22 44 10 40**

- Damage to cables or lines
- Site work close to high-voltage lines
- Excavating/drilling/sheet piling
- Felling trees
- Storage/transport below high-voltage lines

In the event of work within the outer limit of the vicinity zone, contact an approved contractor or e-mail **gravevarsel@elvia.no**

Please ask us if in doubt

Customer services center.

Tel: 02024

Mon-Fri 09.00-16.00

Follow us.

elvia.no

facebook.com/elviaoffisiell

Elvia

Elvia AS, PO Box 4100, NO-2307 Hamar